



291 Mahia Road Weymouth

The Perfect Starter

Starting out, down sizing or wanting to increase your rental portfolio - this spacious low maintenance brick and tile home is the perfect solution.

Hidden away on a freehold 461 sq m section with plenty of off-street parking, is this attractive open plan 3 double bedroom, 2 bathroom, 115 sq m family home.

The home and property have been loved and extremely well maintained for the past 10 years or more. Fully fenced with security gate makes it a perfect setting for young children and pets, or for those family gatherings.

Be quick for viewing. Call Margaret on 021 275 9664

PLEASE NOTE: Specified floor and land area sizes have been obtained from sources such as Property Smart, Auckland Council (LIM) or Title documents.



FOR SALE

Sold

VIEW

pukekohe.ljhooker.co.nz/4DNHFY

CONTACT

Margaret Cullington 021 275 9664

LJ HOOKER PUKEKOHE

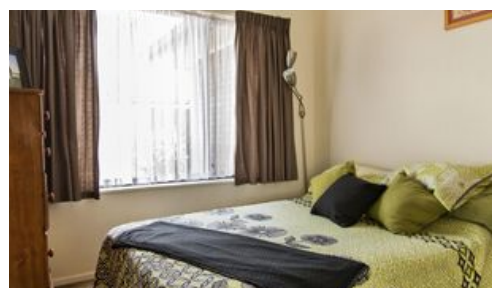
(09) 239 1356

They have not been measured by the Salesperson or LJ Hooker - Realty 2000 Limited. We recommend you seek your own independent legal advice if these sizes are material to your purchasing decision.

More About this Property

PROPERTY ID	4DNHFY
PROPERTY TYPE	Residential
LAND AREA	461 m ²
HOUSE SIZE	115.00 m ²
INCLUDING	

Licensed Real Estate Agents (REAA2008)



LJ Hooker Pukekohe - Realty 2000 Ltd

CONTACT: Margaret Cullington
EMAIL: mcullington.karaka@ljhooker.co.nz
MOBILE: 021 275 9664
PHONE: (09) 239 1356
FAX: (09) 238 4715

DISCLAIMER

The above information has been furnished to us by the Vendor. We have not verified whether or not that information is accurate and do not have any belief one way or the other in its accuracy. We do not accept any responsibility to any person for its accuracy and do no more than pass it on. All interested parties should make and rely upon their own enquiries in order to determine whether or not this information is in fact accurate.



www.ljhooker.co.nz

Residential | Commercial | Rural | Land Sections | Coastal