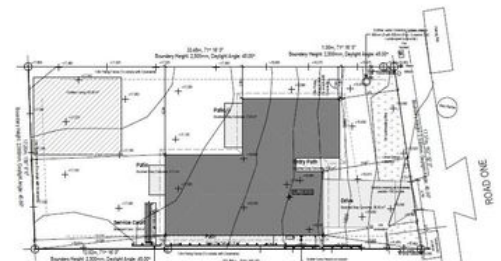




159 m² 602 m² 25 d 4 600+ Kiwisaver



3 2 2

17 Dame Nganeko Drive Glenbrook

PARADISE LIVING AT KAHAWAI POINT

Offering 3 double bedrooms and an open plan living, kitchen and dining area, this home is perfectly designed to maximise space and indoor/outdoor flow. The home features an internal access double garage and a fully landscaped private section perfect for entertaining. Complementing the living and bedroom spaces are the family bathroom and ensuite that are both well-appointed with quality fixtures and fittings.

Kahawai Point is situated along Auckland's Glenbrook Beach Peninsula meaning you will get to enjoy the best of both worlds - modern day living in beautiful coastal and rural surroundings. Situated within easy access to main amenities at neighbouring towns - Waiuku and Pukekohe - as well as the motorway interchange at Drury, making commuting to Auckland's CBD highly feasible. This is a great opportunity to get in at the ground level in an area that has extensive future development planned.

FOR SALE

Sold

VIEW

pukekohe.ljhooker.co.nz/3UXHFY

CONTACT

Dylan Turner 021 315 116

LJ HOOKER PUKEKOHE

(09) 239 1356

CALL DYLAN TURNER FOR MORE INFORMATION OR TO SCHEDULE A TIME TO VIEW 021 315 116.

PLEASE NOTE: Specified floor and land area sizes have been obtained from sources such as Property Smart, Auckland Council (LIM) or Title documents. They have not been measured by the Salesperson or LJ Hooker - Realty 2000 Limited. We recommend you seek your own independent legal advice if these sizes are material to your purchasing decision.

More About this Property

PROPERTY ID	3UXHFY
PROPERTY TYPE	Residential
LAND AREA	602 m ²
HOUSE SIZE	159.00 m ²
INCLUDING	

Licensed Real Estate Agents (REAA2008)

LJ Hooker Pukekohe - Realty 2000 Ltd

CONTACT: Dylan Turner
EMAIL: dturner.manurewa@ljhooker.co.nz
MOBILE: 021 315 116
PHONE: (09) 239 1356
FAX: (09) 238 4715

DISCLAIMER

The above information has been furnished to us by the Vendor. We have not verified whether or not that information is accurate and do not have any belief one way or the other in its accuracy. We do not accept any responsibility to any person for its accuracy and do no more than pass it on. All interested parties should make and rely upon their own enquiries in order to determine whether or not this information is in fact accurate.

